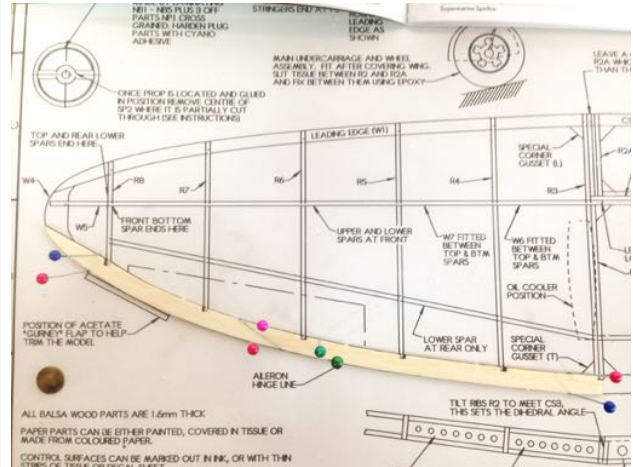
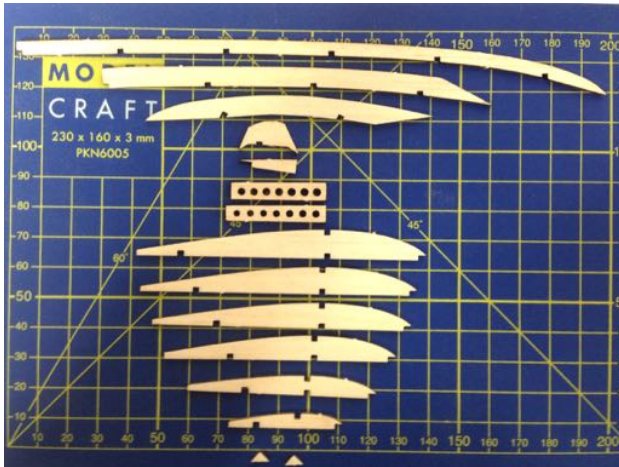


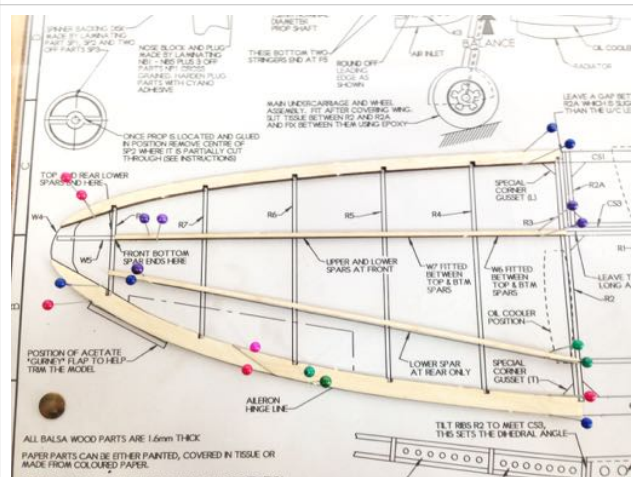
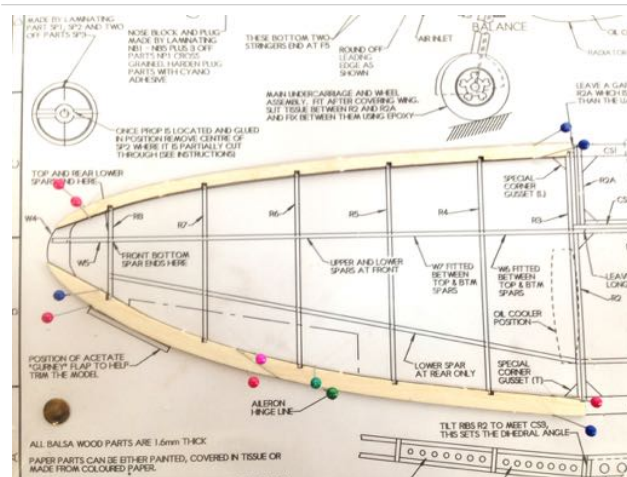
SPITFIRE - MAIN PARTS AND FRAMES BUILDING SCHEDULE

THE MAIN WING PANELS



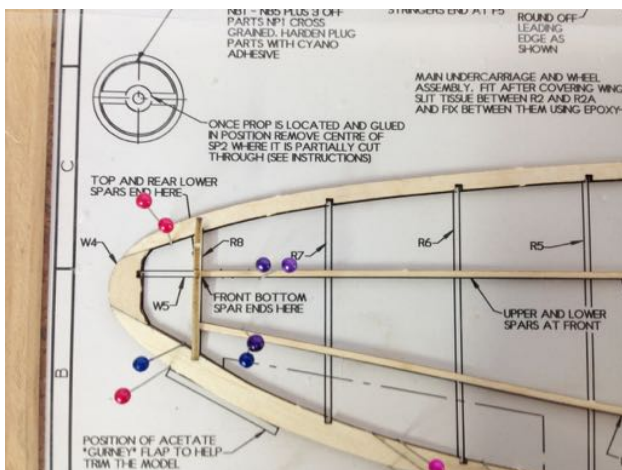
1) Identify and remove one set of parts in the following quantities from the laser cut sheets: 1 off each W1-W7, R3-R8 and special corner gussets L and T.

2) On the left hand wing outline, pin down the two trailing edge parts W2 and W3, making a neat and tight glued 'scarf' joint where shown.

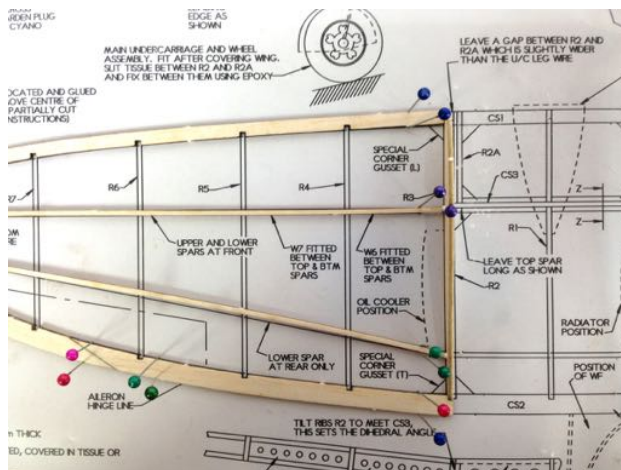


3) Pin down the leading edge W1 along with two pieces of stiff 1.6mm square strip that forms the two lower wing spars, noting that the rear spars finish inside the notch of R8, whilst the front spar butts up to it.

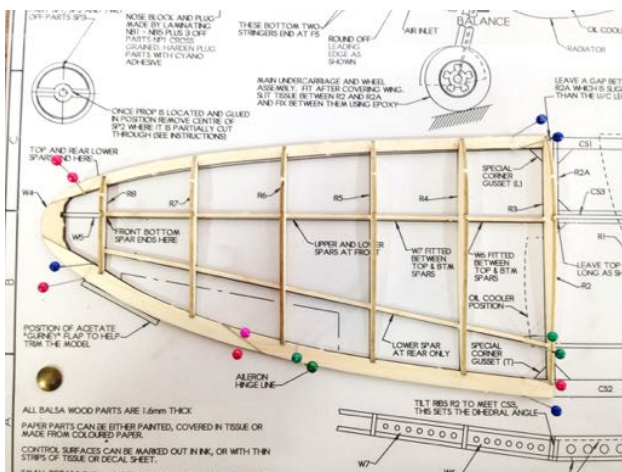
3) Continued



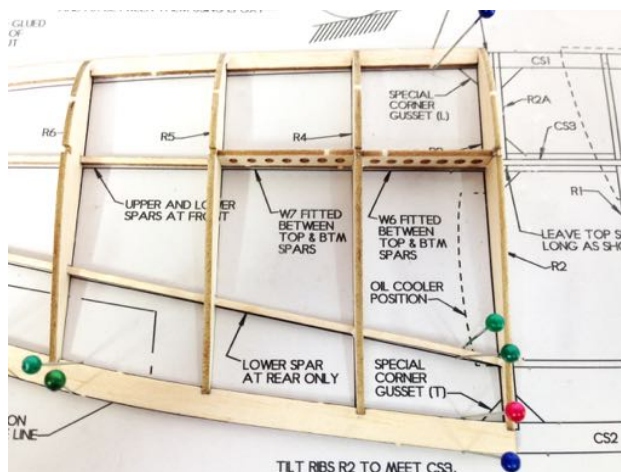
4) Trial fit the tip piece W4 and the inner and outer ribs R3 and R8. Once you are satisfied, glue W4 to the leading and trailing edges ensuring neat and strong butt joints.



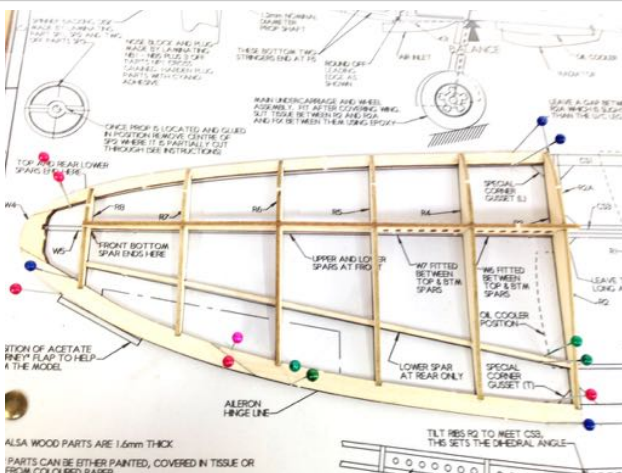
4) Continued



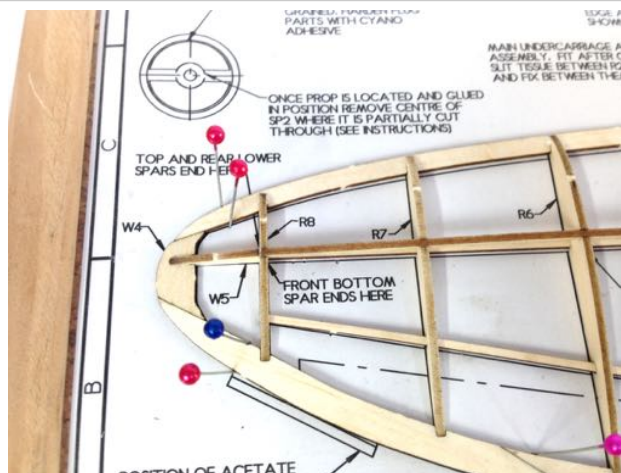
5) Fit and glue all of the ribs making sure that they are upright and properly located in the lower spars, leading and trailing edges.



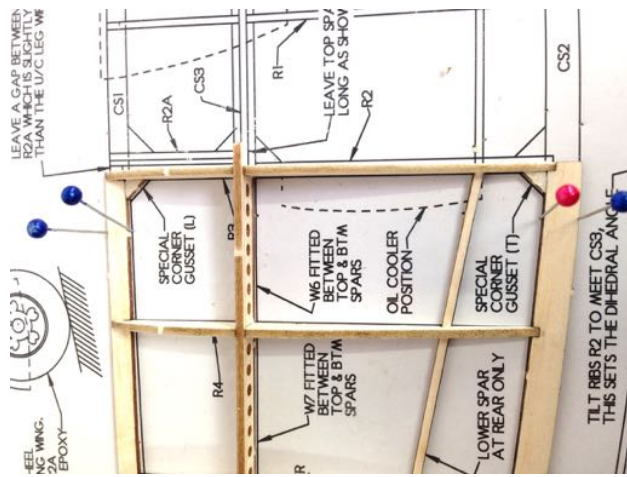
6) In the two 'bays' between R3 to R4 and R4 to R5 fit the parts W6 and W7 on top of the lower spar as shown on the plan.



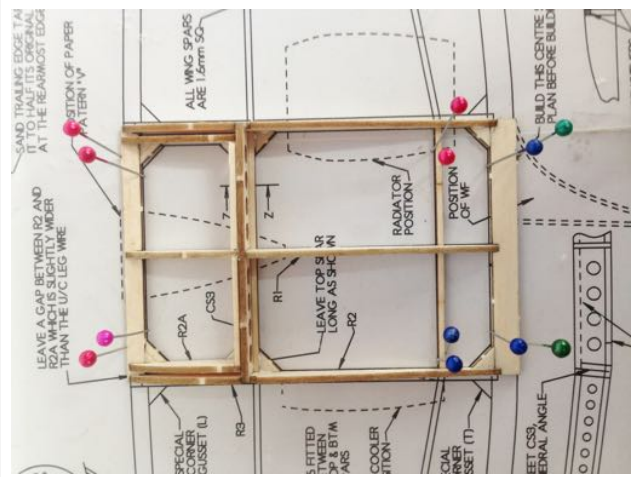
7) Fit a stiff 1.6mm square strip as the upper spar, noting that it runs from the notch of R8 and extends out from R3 as shown on the plan.



8) Glue W5 in position, along with special corner gussets L and T.



8) Continued



9) Repeat for the right hand wing panel. Leave both panels to set before removing them from the building board.