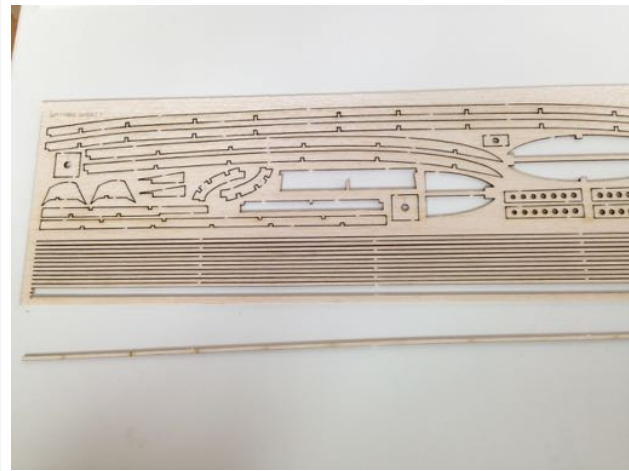
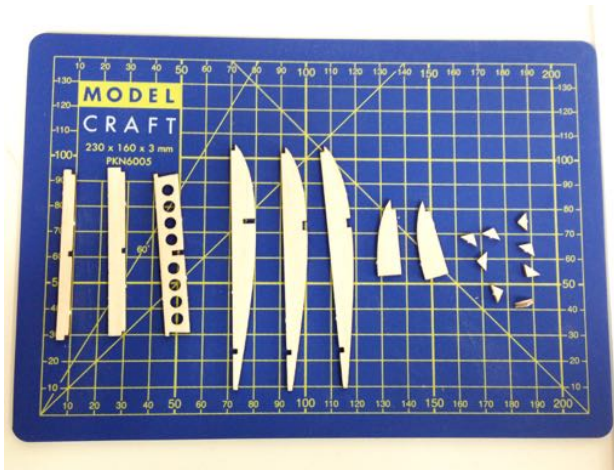


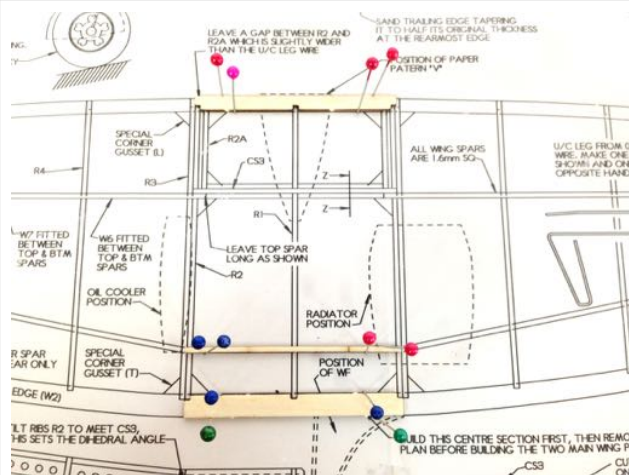
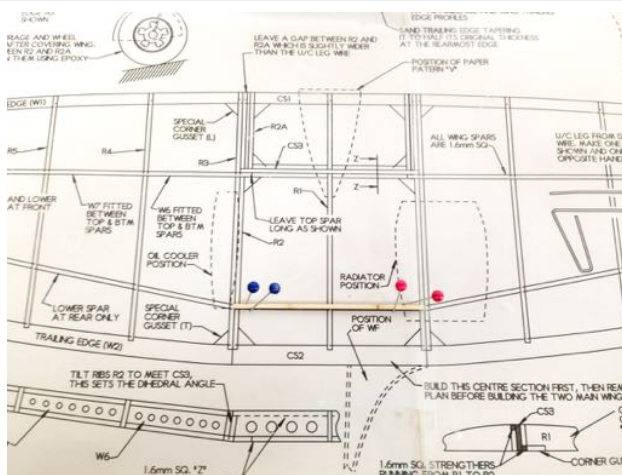
SPITFIRE - MAIN PARTS AND FRAMES BUILDING SCHEDULE

THE CENTRE SECTION



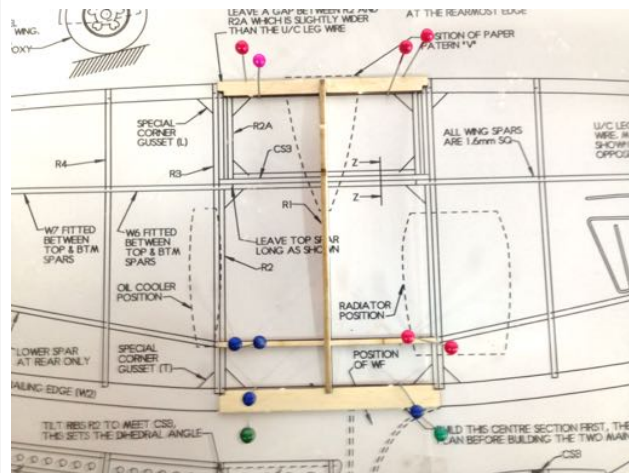
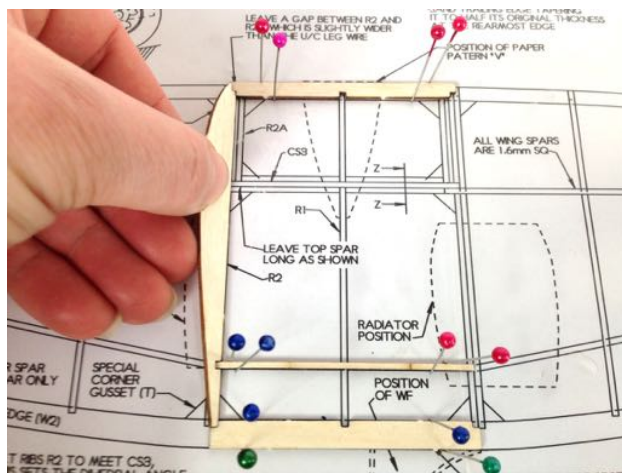
1) Identify and remove all of the parts on the laser cut sheets: CS1, CS2, CS3, R1, R2 (2 off), R2A (2off) and 8 off corner gussets.

2) Cut a 1.6mm square strip from the stiff sheet for the lower rear spar and pin it in position.



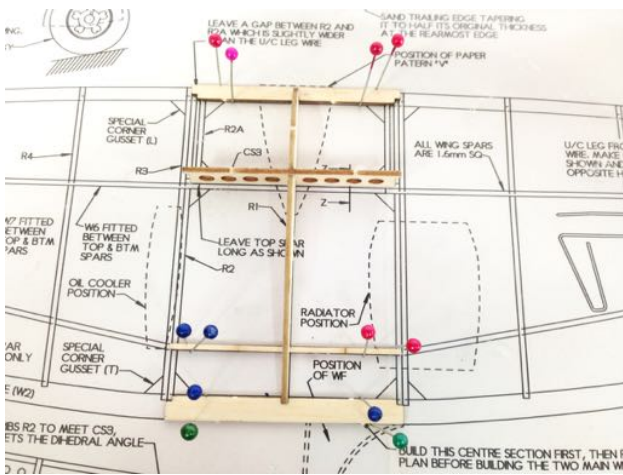
3) Pin down CS1 and CS2 over the outlines on the plan, check the fit at each end using the ribs R2 as a guide.

3) Continued

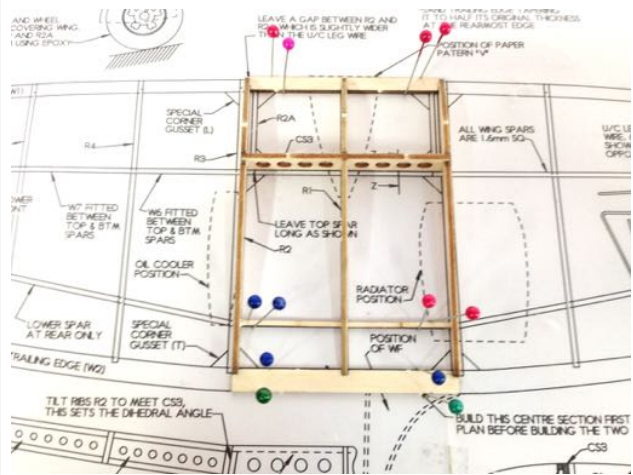


3) Continued

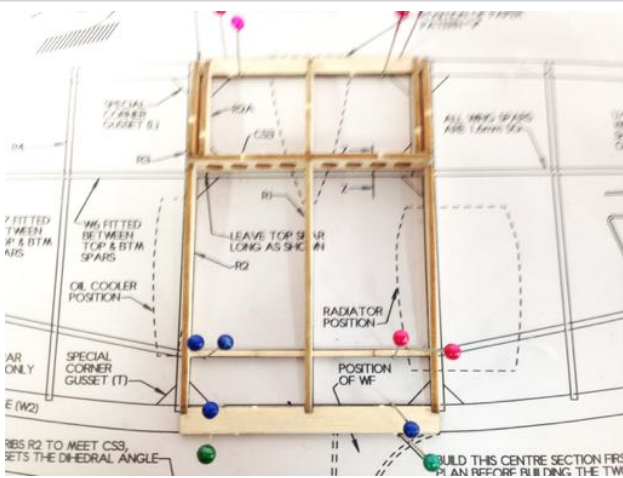
4) Glue in position rib R1 between CS1 and CS2 and over the rear spar ensuring that it is upright and that the ends are located in the notches.



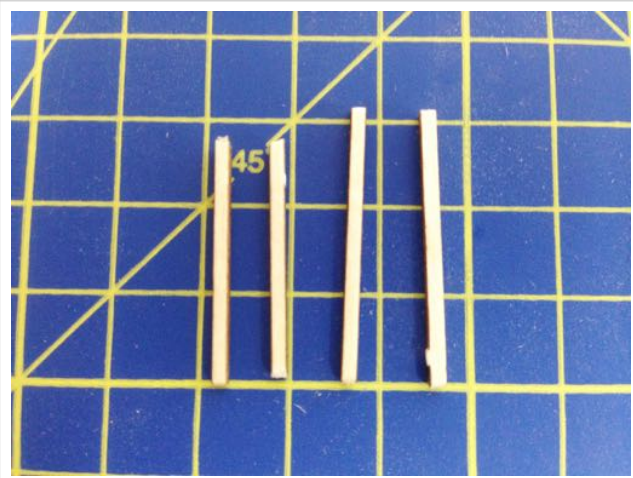
5) Glue in place part CS3, locating the slot into the slot in Rib R1. Ensure that it is upright.



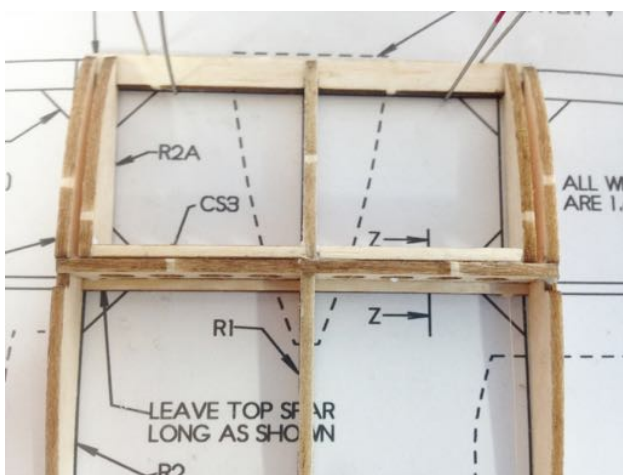
6) Glue in position ribs R2, tilting them to meet the angled end face of CS3. Allow the glue to set for a while before proceeding.



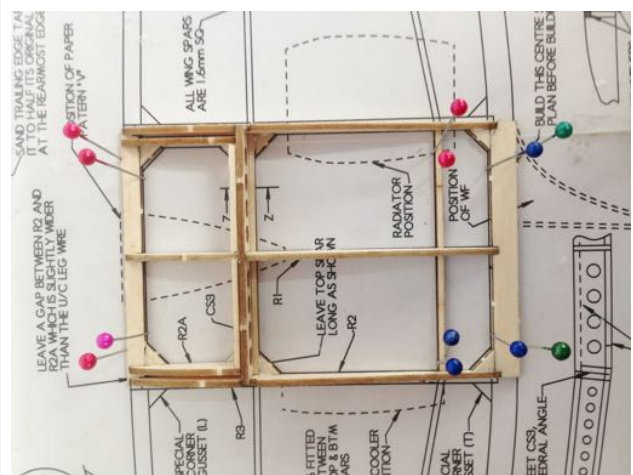
7) Glue in parts R2A tilting them so that their faces are parallel with R2.



8) Referring to the cut away section 'Z-Z', cut lengths of the stiff 1.6mm square strip to make the stiffeners that run along the top of CS3 from R2A to R1 and that run along the bottom of CS3 from R2 to R1. Glue them in place.



8) Continued



9) Glue the corners gussets where shown. Allow the whole assembly to dry and then lift it from the board.