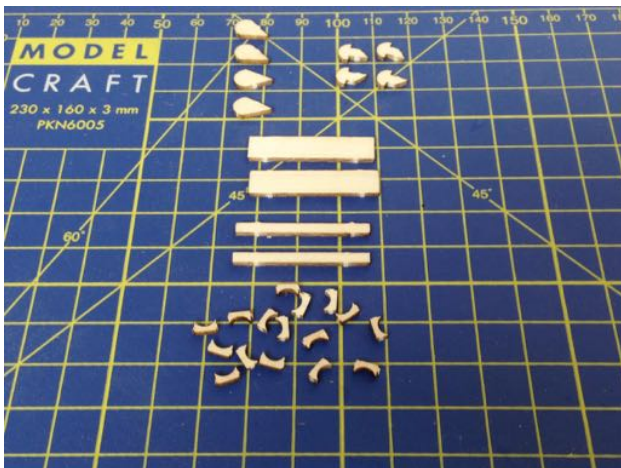


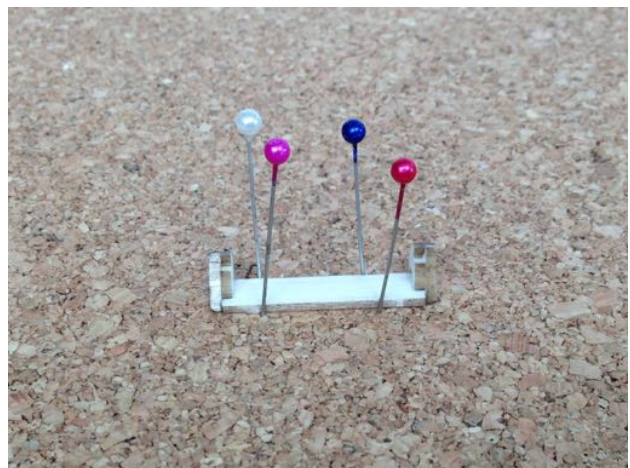
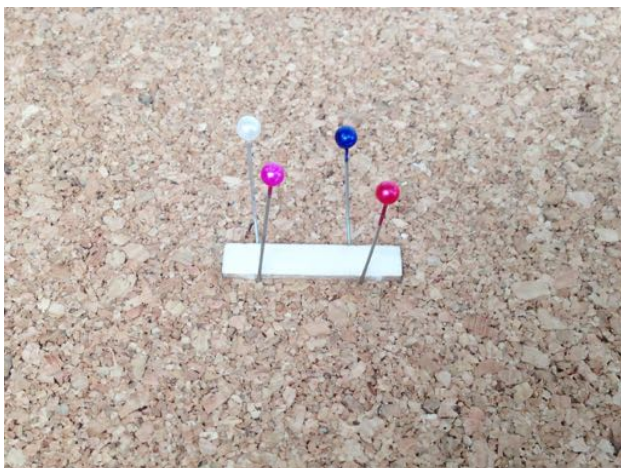
# SE5A - MAIN PARTS AND FRAMES BUILDING SCHEDULE

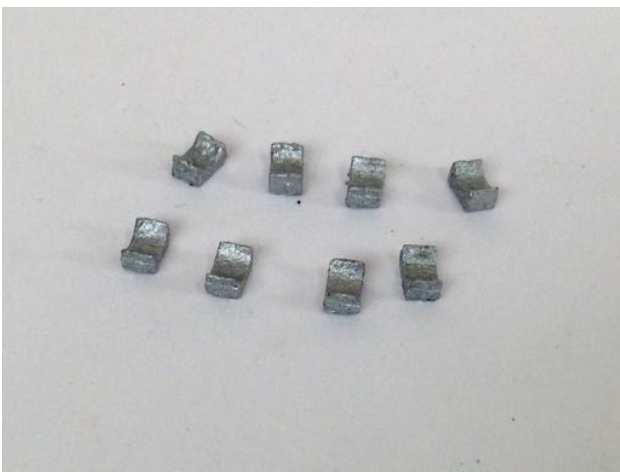
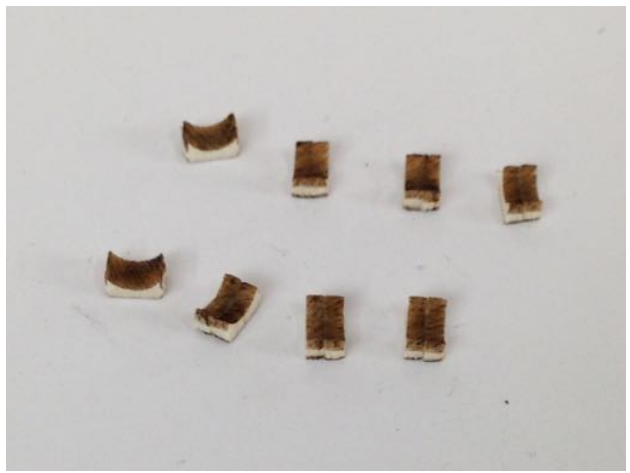
## ROCKER COVERS, EXHAUSTS AND WIND SCREEN

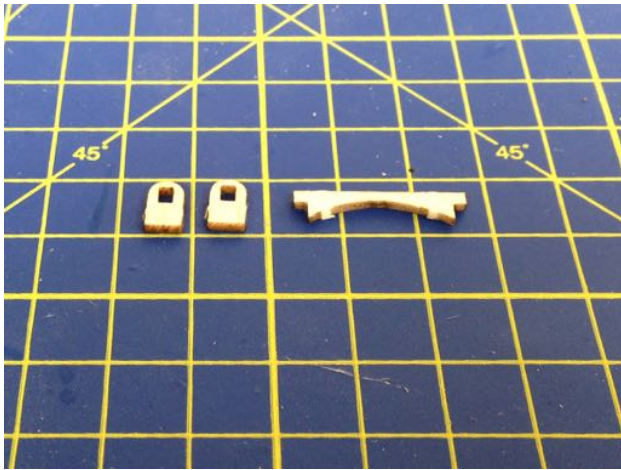


1) Identify and remove parts in the following quantities from the laser cut sheets: 4 off RC1, 4 off RC2, 2 off RC3, 2 off RC4 and 16 off EX1.

2) Make up the rocker covers/manifolds as shown on the plan, being careful to follow the instructions carefully to make up the correct left and right hand parts where indicated.







3) Identify and remove parts in the following quantities from the laser cut sheets: 2 off WS1, and WS2.

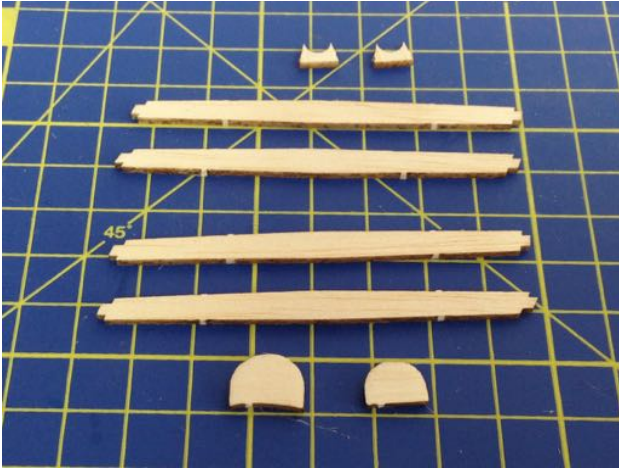


4) Make up the windscreen as shown on the plan, if you are planning to paint the framing, seal and paint it before gluing in the acetate windscreen in position.



4) Continued... You can use small drops of cyano to secure the windscreen to the framing, but do not use too much otherwise it will 'fog' the plastic.

## REMAINING PARTS FOR USE IN THE ASSEMBLY OF THE MODEL



1) After all of the previous building steps have been completed, there should be the following parts left on the laser cut sheets: 2 off each EX2, IS1 and IS2, plus 1 off each HR1, and HR2. Remove these parts from the sheets and set them aside ready for use in the assembly of the model after covering.